



GMT MONTHLY MEMBERSHIP PROGRESS REPORT

Results as of: 6/30/2018

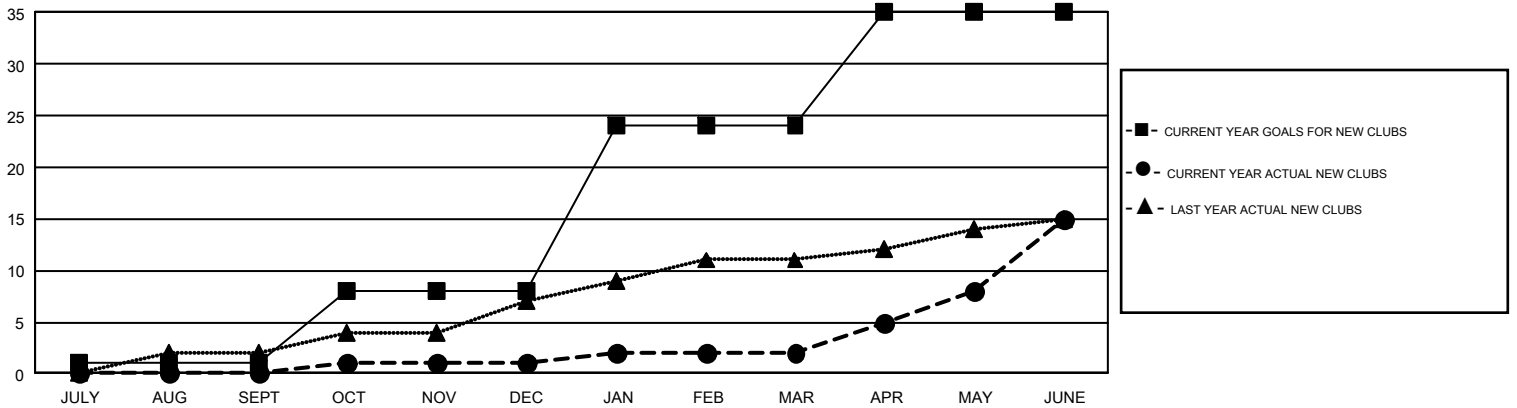
GMT Constitutional Area 4, Group D

GMT: JOOST PAIJMANS

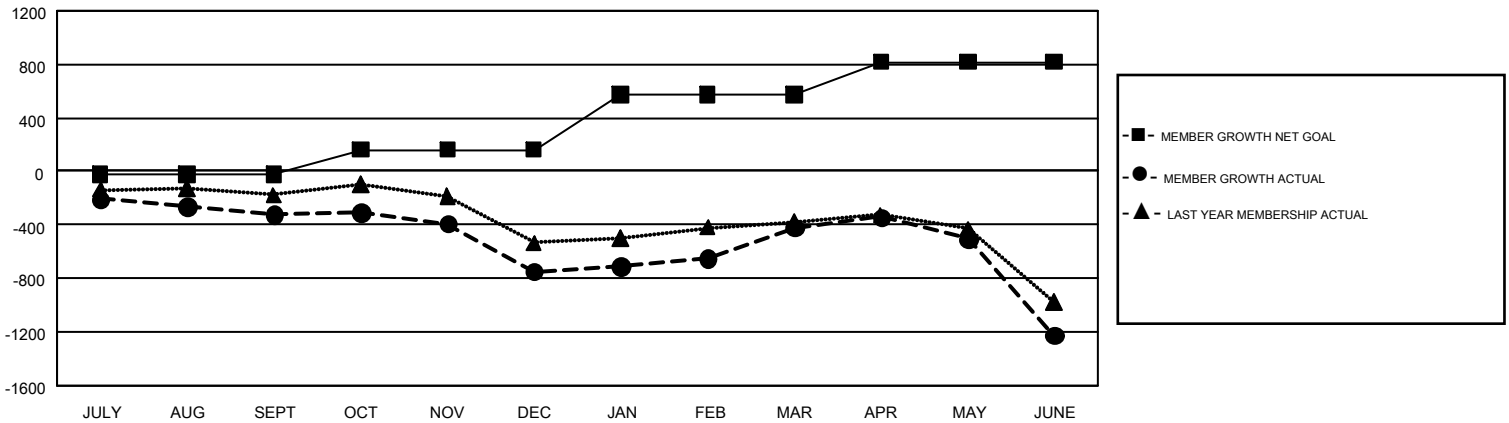
REPORT DOES NOT INCLUDE CLUBS IN UNDISTRICTED AREAS.

Clubs				Members			
RESULTS FOR 2017-2018				RESULTS FOR 2017-2018			
QUARTER	NEW CLUB GOAL	NEW CLUBS	DROPPED CLUBS	QUARTER	MEMBER GROWTH NET GOAL	MEMBER GROWTH ACTUAL	DROPPED MEMBERS ACTUAL (including transfers)
JULY/AUG/SEPT	1	0	10	JULY/AUG/SEPT	-20	431	691
OCT/NOV/DEC	7	1	12	OCT/NOV/DEC	183	502	876
JAN/FEB/MAR	16	1	4	JAN/FEB/MAR	412	976	545
APR/MAY/JUNE	11	13	11	APR/MAY/JUNE	242	1,405	2,072

GOALS AND ACTUAL NEW CLUBS CUMULATIVE



GOALS AND ACTUAL MEMBERS CUMULATIVE



DROPPED CLUBS: 37	961 CLUBS OF 1,538 ADDED 1 OR MORE NEW MEMBERS	<u>GENDER DISTRIBUTION</u> MALE 22,799 (70.75%) FEMALE 9,425 (29.25%)
<u>DROPPED MEMBERS</u> DECEASED 322 CLUB CANCELLED 172 OTHER 3,690 TOTAL 4,184	CLICK HERE FOR CUMULATIVE MEMBERSHIP DATA	TOTAL FAMILY UNIT MEMBERS 0 FAMILY MEMBERS PAYING HALF DUES 0